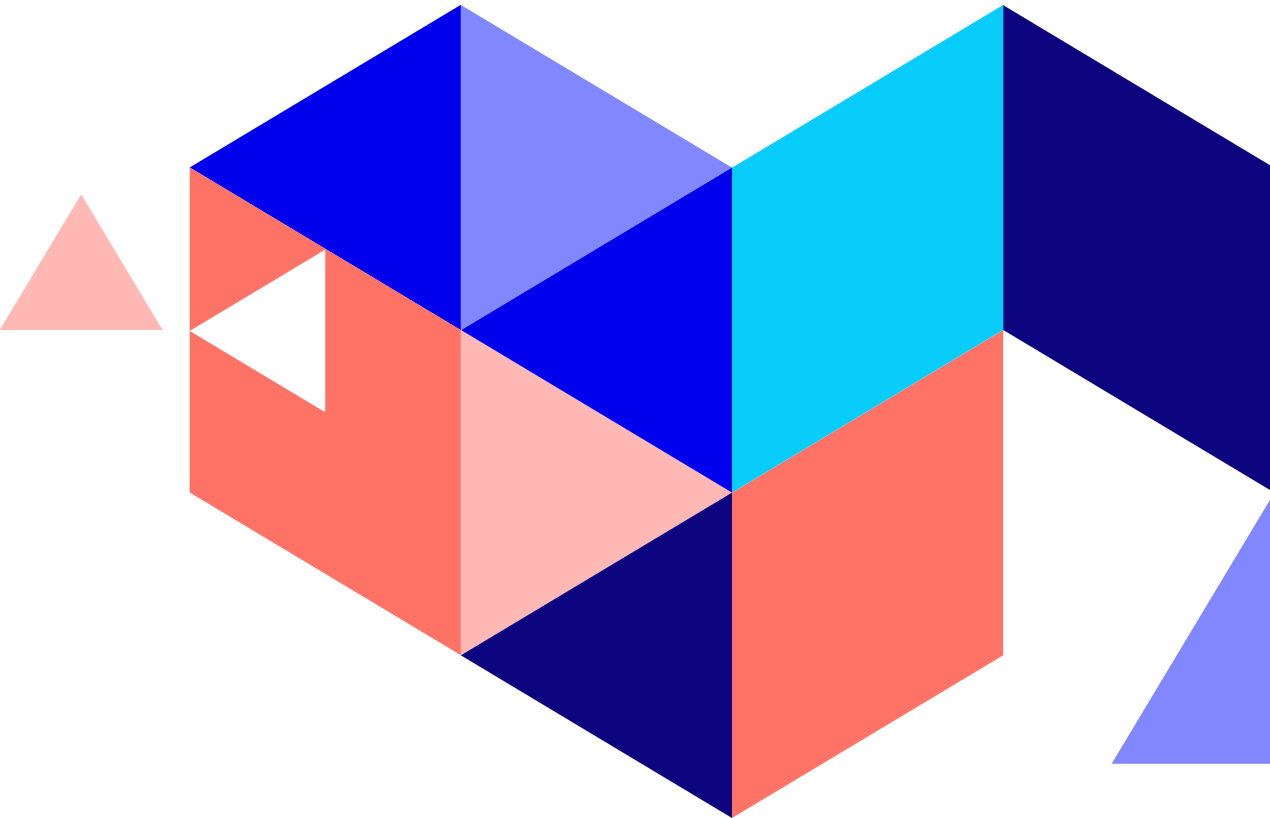


league`

Employee Experience  
Brochure



*Introduction*

**Businesses grow when people carry as much value as profit.**

Employees are one of the most important assets of a business and effective employee experience ensures that they're always plugged into the business's vision and are fully aware of their vital role in achieving it.

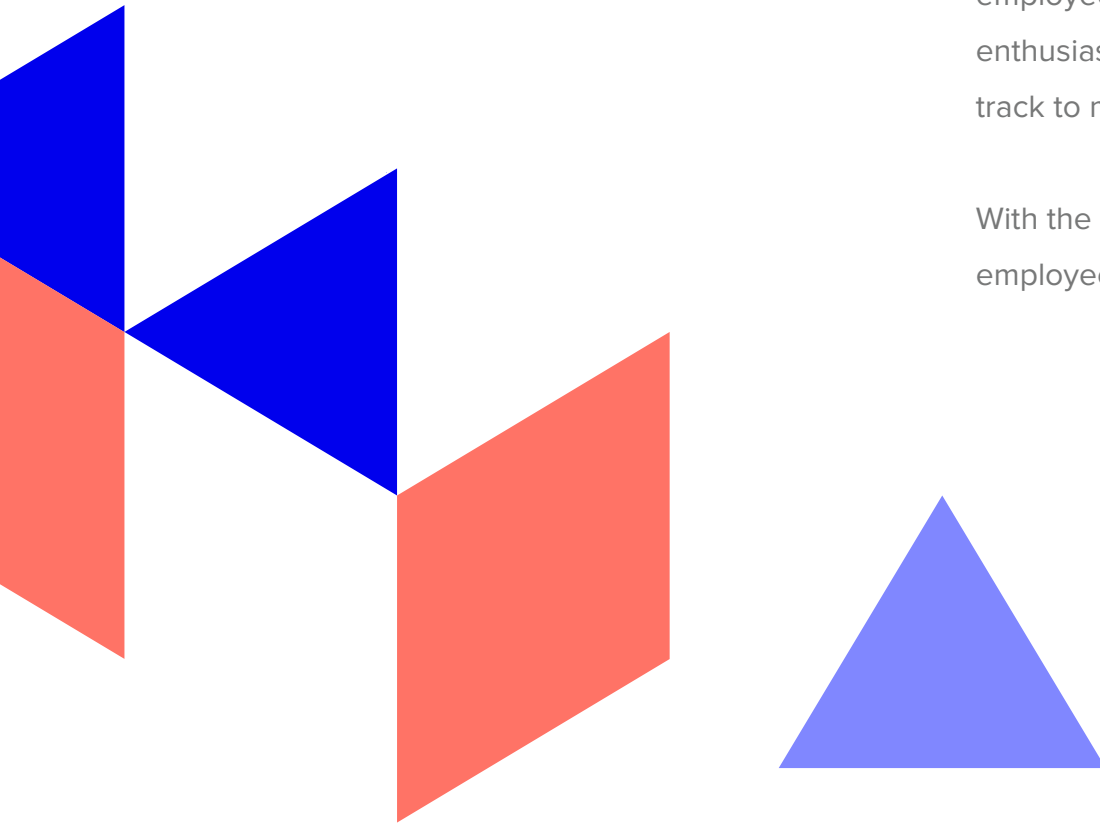
## 02 / Our employee experience solution

---

Businesses without proper employee experience strategies dent their fortunes through absenteeism and the more insidious phenomenon of presenteeism. When it's done well, employee experience improves internal communications and strengthens the relationship between employer and employee with tools that are designed to boost productivity and reinforce a company's corporate culture and values.

This results in a staff complement that's better equipped to service clients and employees who are secure in their jobs. When employees perform with enthusiasm and collaborate seamlessly across departments, the business is on track to meet and exceed its targets.

With the correct employee experience strategy, any business can improve its employee retention and turn work-life integration into a core pillar of growth.



### **Become a talent magnet**

Become an employer brand of choice by building meaningful brand experience with current and future staff.

### **Save costs**

Acquire candidates faster and reduce staff churn with an employee experience strategy that's designed to optimise time and eliminate excess expenditure.

### **Centre company culture**

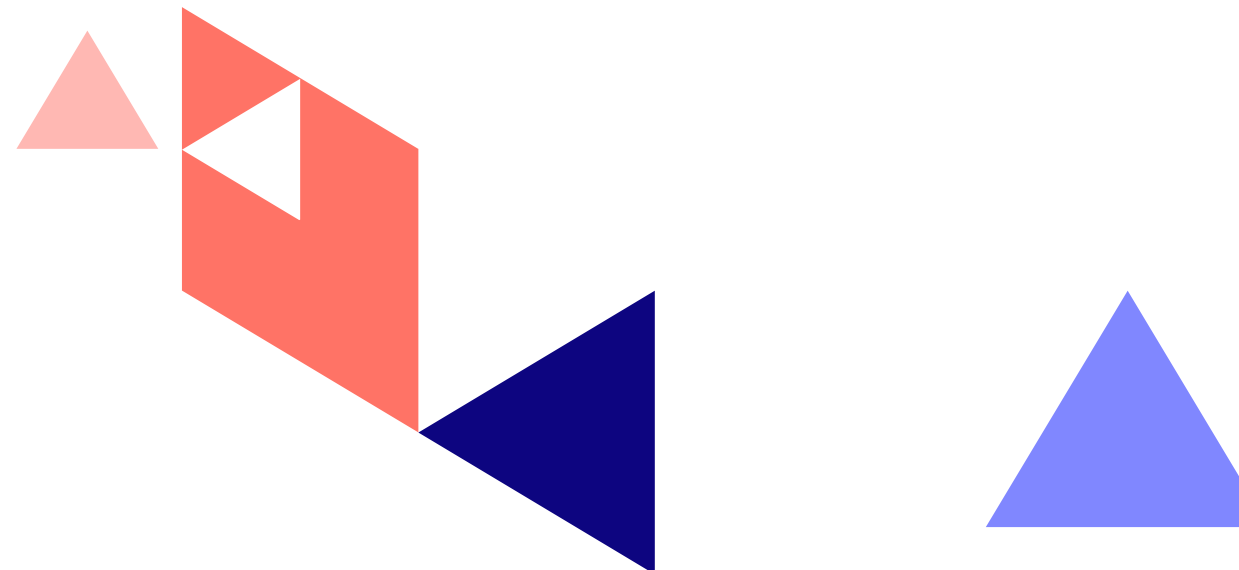
An effective employee experience programme will establish and improve your corporate culture, grow your brand and transform your staff into brand ambassadors.

### **Streamline HR end to end**

A holistic digital HR strategy can help to digitally drive the entire HR process from onboarding to conclusion.

### **Maintain rapport**

Gain a better understanding of your employees' satisfaction with the business and create a working environment built on mutual trust and open communications between employee and employer.



---

# 01

## **Benchmark your EX.**

We conduct thorough research and assess your current EX to gain an insight into which approach will have the maximum impact on your overall employee experience strategy.

---

# 02

## **Create an EX roadmap.**

Based on your employee experience journey requirements and goals, we will build an insight-led EX roadmap complete with a detailed blueprint for implementation.

---

# 03

## **EX strategy and plan.**

With data-driven insights and your business's requirements, we plan and design an EX strategy and journey that will help you to attract and retain the best talent.

---

# 04

## **Customise and implement.**

We determine and implement the digital tools and software you require to deliver your EX strategy and customise them to support your unique employee experience components.

---

# 05

## **Implement, analyse and optimise.**

We leverage data and feedback from employee satisfaction and experience surveys to implement your EX strategy and ensure that it's tested for continuous improvement.

---

# 06

## **Visibility through reporting.**

Our intuitive reporting and dashboards deliver visibility of all components of your employee experience strategy and its progress.

**Our team will implement and drive the process with you, ensuring that your employee experience elements are tested regularly and analysed for continuous improvement.**

**Let's chat.**

